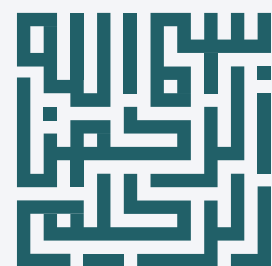




الاتحاد السعودي للشطرنج  
SAUDI CHESS FEDERATION



## Chess Technical Regulations for Private Clubs



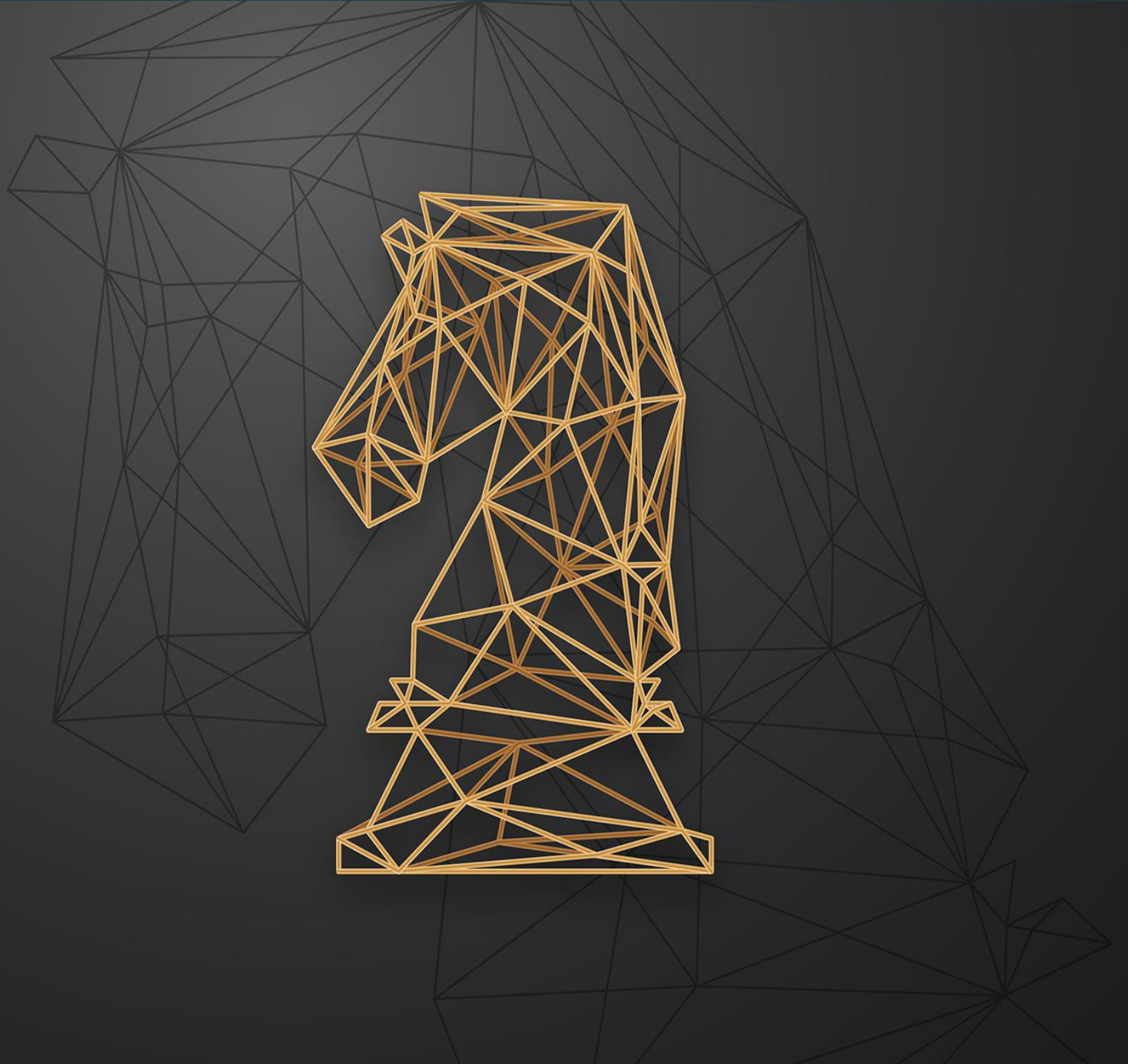


## Table of Content

A	Technical Requirement
1	Coaches
2	Facilities
3	Equipment
4	Safety
5	Competitions

B	Administrative Requirement
6	Membership
7	Fees
8	Violations & Penalties

# A/ Technical Requirements





## 1. Coaches

- 1.1 Trainer must have a FIDE accredited certification, and his rating is more than 1600 Elo
- 1.2 Requirement of 1 technical supervisor & 1 manager



## 2. Facilities

### 2.1 Playing Hall Requirements

1. Minimum space of 130 square meters
2. Metallic background banner frame of 33 m x 2.5 m
3. Minimum 20 table stickers carrying the emblem
4. Carpet cover for the floors
5. 3 metallic information boards of 0.5 m x 2 m
6. 100 square shaped safety boxes for phones
7. Press conference information board
8. 80 chairs
9. 80 chair covers
10. 33 meters of pullable airport barriers
11. 80 A4 paper stands
12. 40 A5 numbering stands for tables
13. 1 PC
14. 1 color printer



## 2. Facilities

### 2.2 Training Center Requirements

1. Minimum space of 30 square meters
2. 1 projector
3. 1 PC
4. 1 color printer
5. 1 book storage
6. 1 set of office appliance
7. 10 chairs



## 3. Equipment

**3.1** 40 DGT Chess Clocks

**3.2** 40 Chess Boards

**3.3** 20 Chess Boards 1.5 m of length and 0.8 m in width

**3.4** 40 chairs





## 4. Safety

**4.1** Upon acceptance of the player, the player is required to submit a medical examination stating that the participant is medically fit and the club is held the full responsibility for that.

- To obtain it, please fill out the following form (player form): <http://sfsm.org.sa/mos20>
- Then fill in the following form (hospital / clinic form): <http://sfsm.org.sa/mos10>

**4.2** Having a certified physiotherapist for the team or a valid contract with a clinic from the Saudi Federation for Health Specialties. In the event that a specialist is available but not accredited, one can apply for accreditation by filling out the following form by the Saudi Federation for Sports Medicine (SFSM) <http://sfsm.org.sa/mos30>

**\*\*** If needed, SFSM provides a list of physiotherapists. To request, please click on: <http://sfsm.org.sa/mos40>

**4.3 First Aid** - Provide first aid kit with adequate equipment as it's stipulated here <http://sfsm.org.sa/mos70> as per SFSM's minimum standards, and to have an ambulance car during games & tournaments (if available).

**\*\*** For your convenience, we have prepared a ready-made first aid kit, to obtain it please click on the below:

<http://sfsm.org.sa/nafes/>

- ✓ **Small Bag:** SAR 12,650 (up to 50 persons)
- ✓ **Large bag:** SAR 14,375 (up to 100 persons)

**4.4 Fire alarm system according to the requirements of the Civil Defense**



## 5. Competition

**5.1** All Chess players from amateur to professional levels have the right to participate in all competitions unless announced in the tournament-specific otherwise.

**5.2** The roles of tournament organizing committee are chosen as follows:

1 Tournament manager - 1 Tournament Manager's assistant – 2 technical assistants – 3 to 6 supervisors)

**5.3** the arbiters team are chosen as follows:

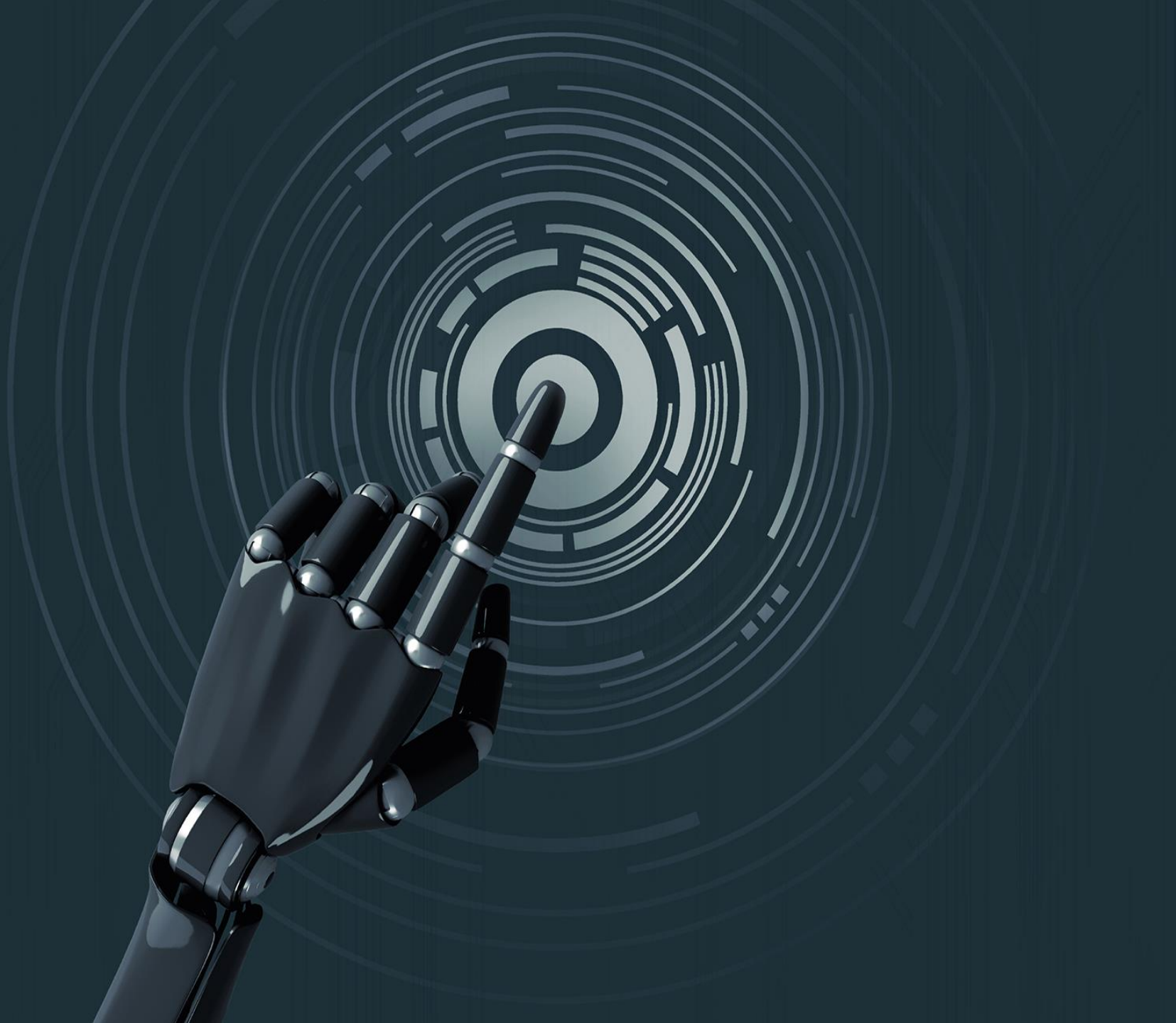
1 general arbiter - 1 general arbiter assistant - 1 Swiss-manager officer - 3 appeal committee members.

**5.4** For each team match, an arbiter is appointed where in Swiss system tournaments, an arbiter is appointed for each 10 players.

**5.5 List of Federation competitions:**

1. Kingdom Qualifiers Chess Championship
2. Regional Chess Championship
3. Universities Chess Championship
4. Junior Chess Championship
5. Schools Chess Championship

# B/ Administrative Requirements





## 6. Membership

**6.1** To obtain membership in the federation, the club must submit an application to the Saudi Chess Federation two months before the start of the season with the following attachments:

- ❖ A statement of the names, qualifications and experiences of the technical and supervisors team of the game.
- ❖ A statement including the existing facilities, stadiums and equipment
- ❖ A pledge of compliance with the regulations, decisions and regulations promulgated by the Federation.
- ❖ Receipt of the prescribed fees payment for joining the federation's membership, which is 10,000 riyals (ten thousand Saudi riyals)

It is thereby activated after obtaining the commercial registration from the Ministry of Commerce and the licensing from the Ministry of Sports.

**6.2** The board of directors of the federation shall review the request and issue its decision within 30 (thirty) days from the commencement date on which the request was submitted by the general secretariat of the federation.

**6.3** The Saudi Chess Federation investigates and confirms the technical requirements.



## 6. Membership

- 6.4** The applicant shall be notified of the decision of the Board of Directors within fifteen days from the date of approval on the address included in the joining application, and the Ministry shall provide a copy of the decision.
- \* An applicant for membership is considered a member of the Federation from the date of the decision issuance by the Board of Directors.
- 6.5** In the event that the application by the board of directors is rejected, the decision must be justified, and the membership applicant has the right to appeal the decision to the Ministry within 15 days from the date on which he is informed of the decision, and its decision is considered as a final settlement.
- 6.6** If the membership applicant is not notified of the decision of the board of directors officially during the periods referred to in the aforementioned paragraphs, then he has the right to elevate the matter to the Ministry to take the final decision within thirty days of its receipt



## 7. Fees

**7.1** Annual membership fees: SAR 3,000

### **7.2** Tournament fees:

**7.2.1** The fees for a tournament in the classical chess system are SAR 600

**7.2.2** Fees for a tournament with a speedy chess system of SAR 300

**7.2.3** Blitz Chess Championship SAR 300



## 8. Violations & Penalties

	Violation	Penalty	
		1 <sup>st</sup> Time	2 <sup>nd</sup> Time
1	Noncompliance with rules, regulations and instructions announced by the Saudi Chess Federation's Management.	Warning letter	Warning with temporary termination of club activities.
2	Committing an offense towards the federation's committees, arbiters and members.	Warning letter	Warning with temporary termination of club activities.
3	Causing the discontinuation of play and tournaments.	Warning letter	Warning with temporary termination of club activities.
4	Withdrawing or missing a team match without a legitimate cause.	Warning letter	Warning with temporary termination of club activities.
5	Committing fraud or cheating	Warning letter	Warning with temporary termination of club activities.
6	Withdrawing from a tournament without a legitimate cause.	Warning letter	Warning with temporary termination of club activities.
7	Failing to pay fees timely.	Warning letter	Warning with temporary termination of club activities.

**THANK YOU**